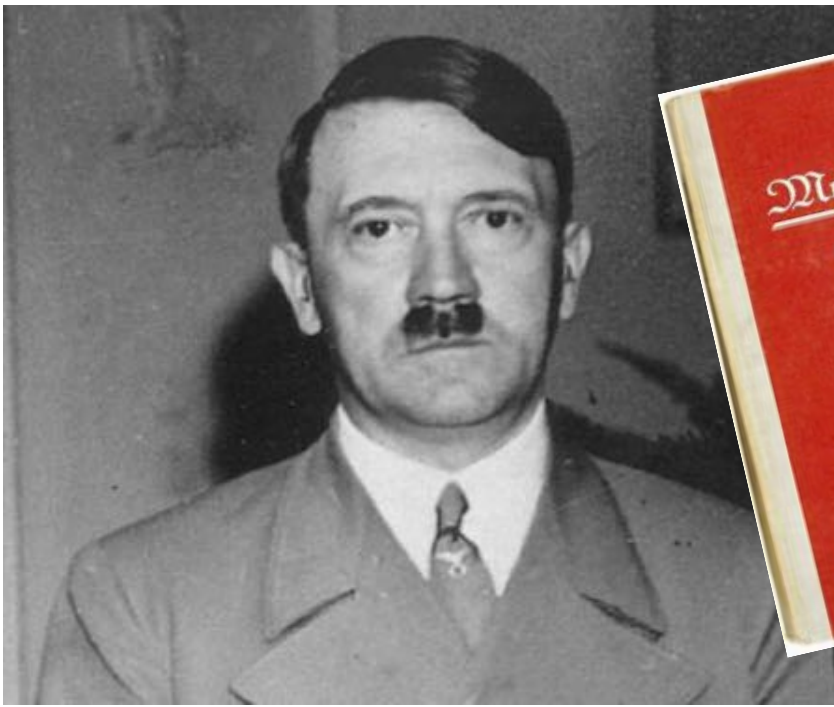




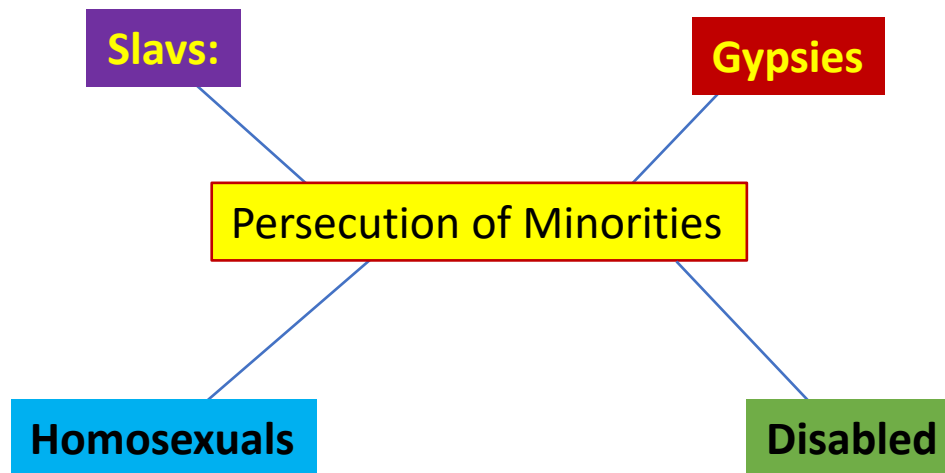
Nazi persecution of Minorities



- **Herrenvolk** (Master race) – tall, blond, blue-eyed, athletic
- **Untermenschen** (sub-humans) – Slavs, gypsies, Jews

“Untermenschen Lebensunwertes”

Sub-humans unworthy of life



Slavs:

- Ancient tribes who emigrated into Europe from the East
- Untermenschen – as taught in schools
- Different origin from Aryans so should be treated differently
- Lebensraum – Slavic lands should be taken and used for Germans extra ‘living space’
- Slavs were persecuted less than some other minorities before WW2



Gypsies:

- 26,000 in Germany in the early 1930s
- Nazis believed they didn't work enough or contribute enough taxes
- They also posed a threat to the racial purity of Germany
- 1933: Often arrested as 'social nuisances' and sent to camps
- 1936: Forced to live in cramped camps with no electricity and little water
- 1938: Banned from travelling in groups
- 1939: All gypsies should prepare for deportation

Homosexuals:

- Nazis believed homosexuals lowered moral standards and spoiled the purity of the German race
- 1935 – Laws against homosexuality led to 766 males being imprisoned
- 1936 – 4000 imprisoned
- 1938 – 8000 imprisoned
- 5000 German homosexuals died in concentration camps
- Homosexuals were often castrated



Disable and Mentally Ill





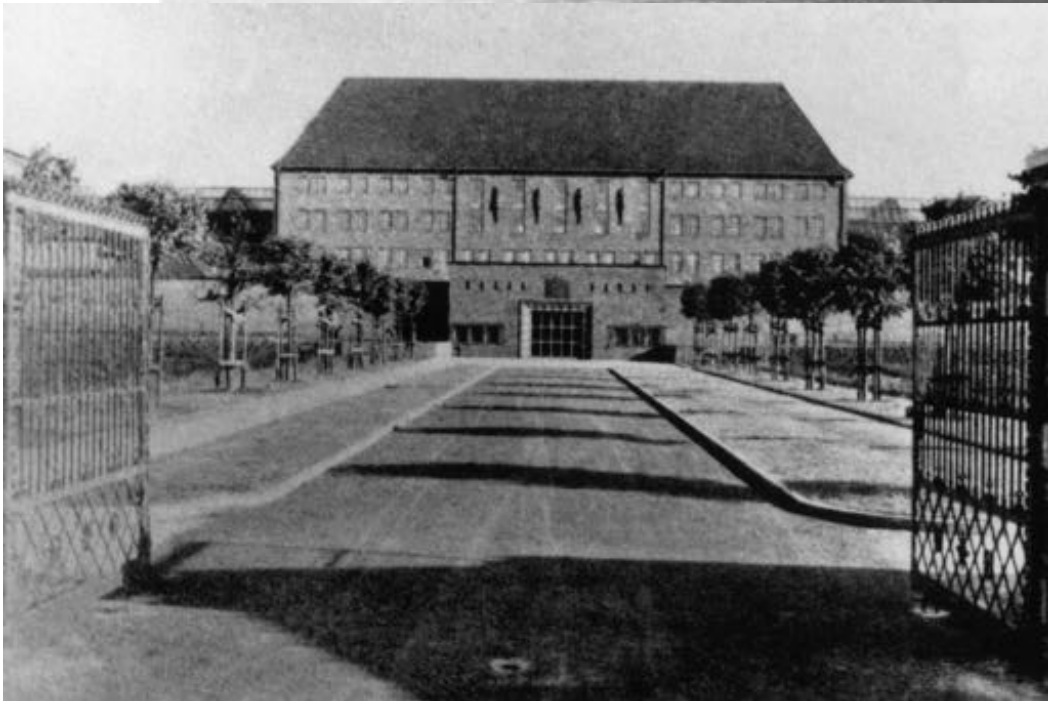
Hans Frank was a blonde haired, blue eyed German child born in 1925.

In 1941, at the age of 16 he was executed by the Nazis but why?

He had epilepsy















Ernst Lossa



Aged: 14





Disabled & Mentally Ill:

- They were a burden on society & weakened racial purity
- 1933: A law was passed - leading to compulsory sterilisation (400,000 by 1939)
- Mentally ill, alcoholic, deformed, epileptic, deaf, blind
- Babies with mental or physical disabilities should be killed by starvation or lethal injection, eventually up to 17 year olds were included – **T4 Programme**
- 5000 children with disabilities were killed





This genetically ill person will cost our people's community 60,000 marks over his lifetime. Citizens, that is your money.

Read *Neues Volk*, the monthly of the racial policy office of the NSDAP

Exam style question:
What can you infer from this source about life in Nazi Germany?

Two inference needed.

I can infer that.....

Evidence which tells me that.....